

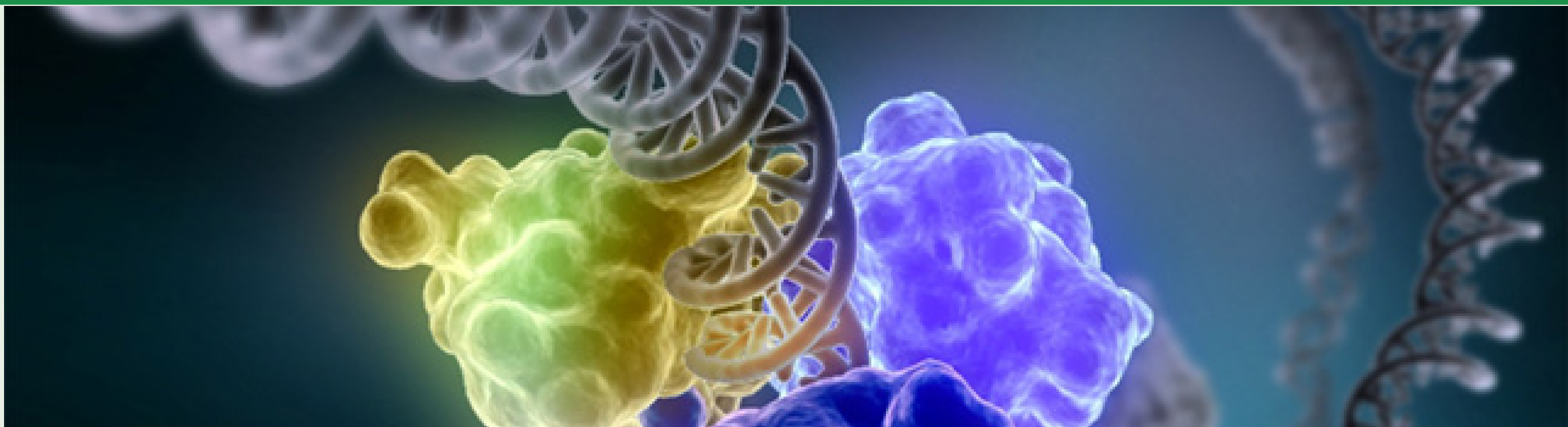


*Im Focus das Leben*  
Universität zu Lübeck

Dr. rer. nat.  
Dr.-Ing.  
Ph.D.

# Doctoral Programme

Bioinformatics  
Biomedical Imaging  
Crystallography  
Inhibitor Design  
Medical Robotics  
Neuro-Engineering  
RNA Structure  
Stem Cells



## Graduate School for Computing in Medicine and Life Sciences

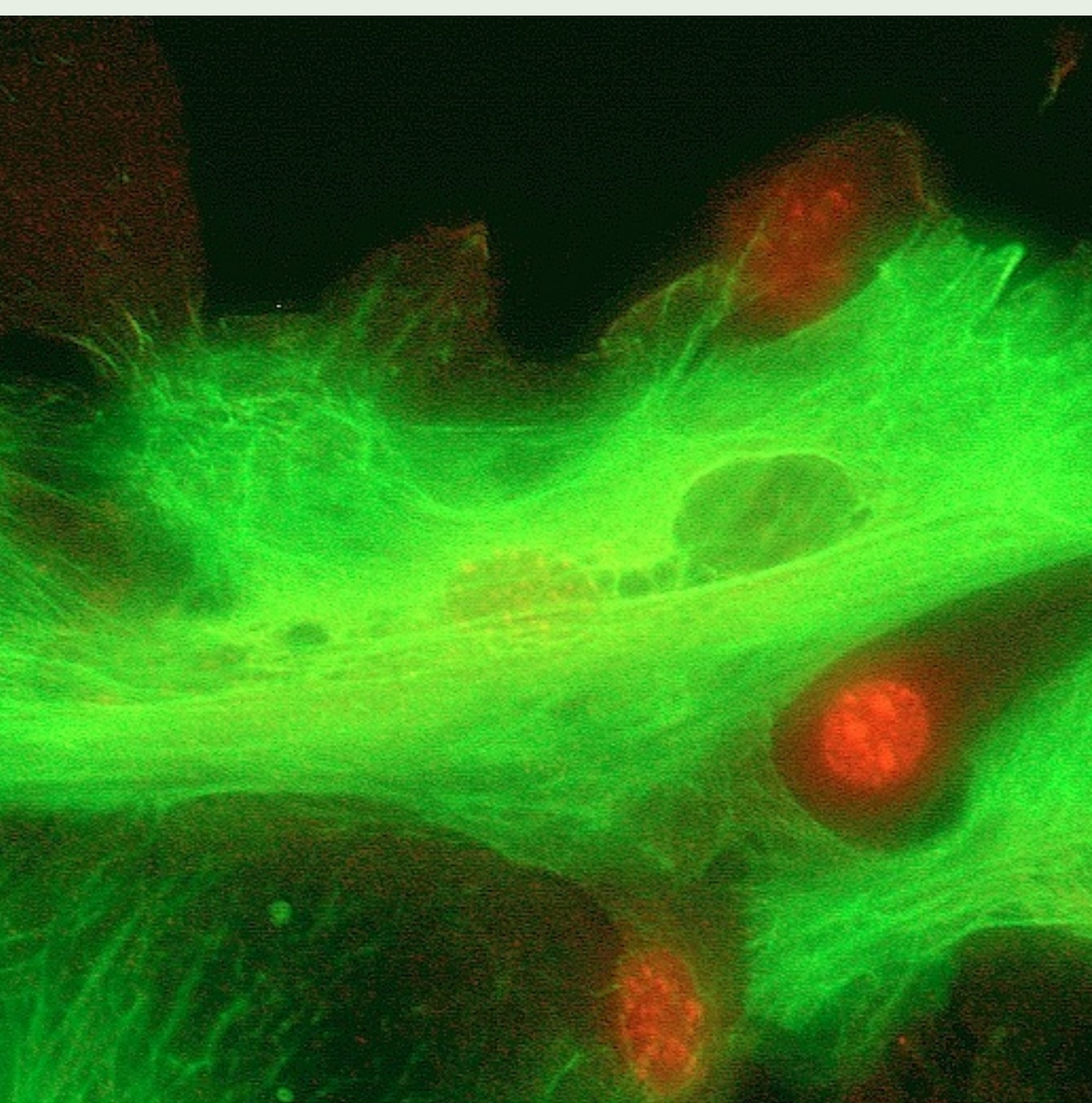
The Graduate School for Computing in Medicine and Life Sciences was established within Germany's highly competitive academic *Exzellenzinitiative*. The Graduate School aims to integrate medicine, computer science and life sciences through structured international doctoral education rooted in a strong research foundation.

### A Unique Opportunity

By offering a tailored curriculum incorporating disciplinary expertise, international networking and personality development, the Graduate School prepares doctoral candidates for a successful career in academia or industry.

### And more...

- Excellent research environment
- Interdisciplinary supervision
- International student body
- English as working language
- Broad financial support



```
my $dnaalign = new Bio::SimpleAlign;  
my $seqorder = 0;  
my $alnlen = $aln->length;  
foreach my $seq ( $aln->each_seq ) {  
    my $newseq;  
  
    foreach my $pos ( 1..$alnlen ) {  
        my $loc = $seq->location_f  
        my $dna = '';  
        if( !defined $loc || $loc->  
            $dna = '---';  
        } else {  
            # to readjust to c  
            # end needs to be  
            # to get this  
            my ($start,$end) =  
  
            if( $start <= 0 || :  
                print "sta
```



BILDARCHIV: DNA-BILD VON TOM EILENBERGER, WASHINGTON UNIVERSITY SCHOOL OF MEDICINE IN ST. LOUIS

[www.gradschool.uni-luebeck.de](http://www.gradschool.uni-luebeck.de)